

Frontier DE100

Nozzle Upkeep Mode Setting

Instruction Guide

Contents

1	Nozzle Upkeep Mode Setting Tool	2
2	Nozzle Upkeep Mode Setting Screen.....	2
3	Nozzle Upkeep Mode Setting Procedure.....	3
3.1	Startup of Nozzle Upkeep Mode Setting Tool (for Windows)	3
3.2	Startup of Nozzle Upkeep Mode Setting Tool (for Mac)	3
3.3	Setting Procedure.....	4
4	Version Check	5

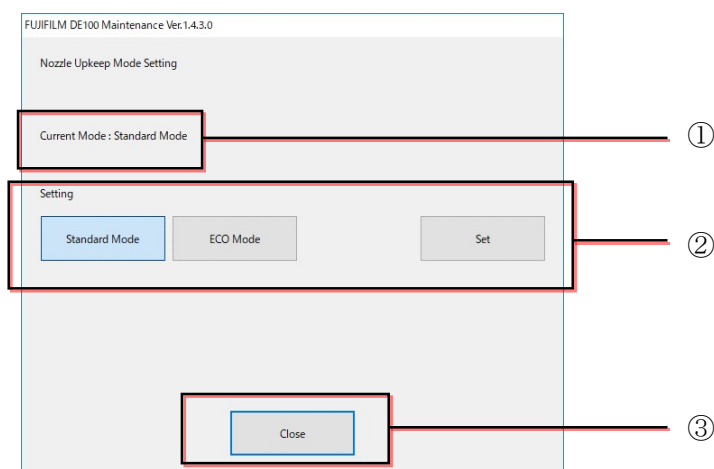
Feb 03, 2020
Fujifilm Corporation

1 Nozzle Upkeep Mode Setting Tool

The DE100 performs nozzle maintenance at the start of printing and ejects the ink in the print head nozzle to the maintenance cartridge so that to adjust the ink droplet shape on the print. Therefore, when ordering a small number (1 sheet / order or 2 sheets / order) in large quantities (50 orders or more per day), the amount of waste ink increases and the frequency of replacing maintenance cartridges increases. When performing such printing work, the amount of waste ink can be reduced by setting the ECO mode from Nozzle Upkeep Mode Setting.

Standard Mode	This mode is set by default to maintain high quality print. (Recommended)
ECO Mode	<p>This mode reduces the amount of ink used for nozzle maintenance when using DE100 as shown below.</p> <p><u>The average number of prints is 1-2 sheets per order (Ex: ID photo), and the order quantity is more than 50 orders per day.</u></p>

2 Nozzle Upkeep Mode Setting Screen



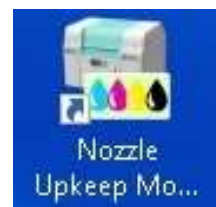
① Current Mode	Displays the current setting of connected printer.
② Setting	<p>Select "Standard mode" or "ECO mode".</p> <p>Click the "Set" button after selecting the mode to apply the settings.</p>
③ Close button	Close the "Nozzle Upkeep Mode Setting" screen.

3 Nozzle Upkeep Mode Setting Procedure

3.1 Startup of Nozzle Upkeep Mode Setting Tool (for Windows)

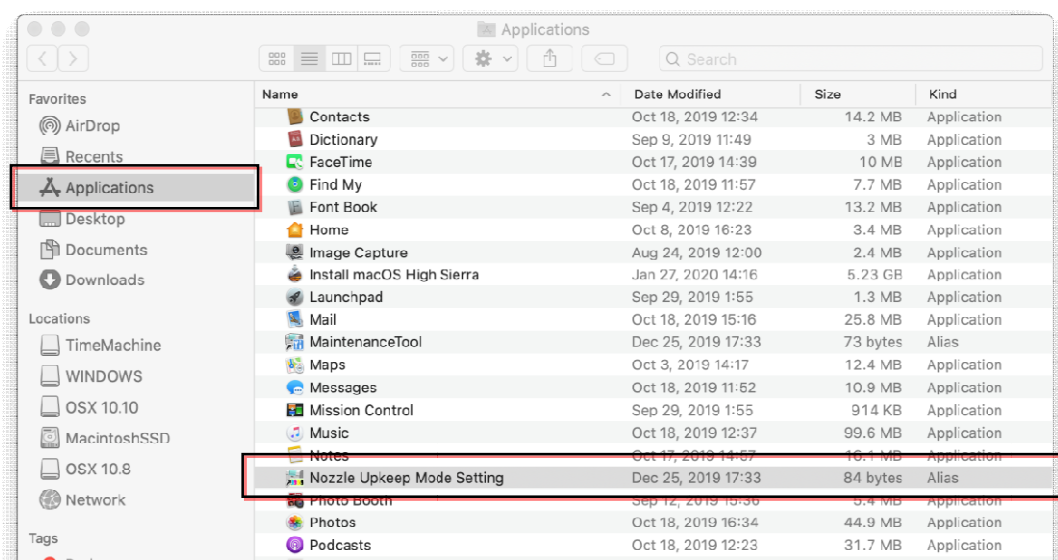
Double-click the “Nozzle Upkeep Mode Setting” icon on desktop.

※If there is no “Nozzle Upkeep Mode Setting” icon on the desktop,
open "All Programs" from the start menu and select "FUJIFILM DE100",
and then run the “Nozzle Upkeep Mode Setting”.

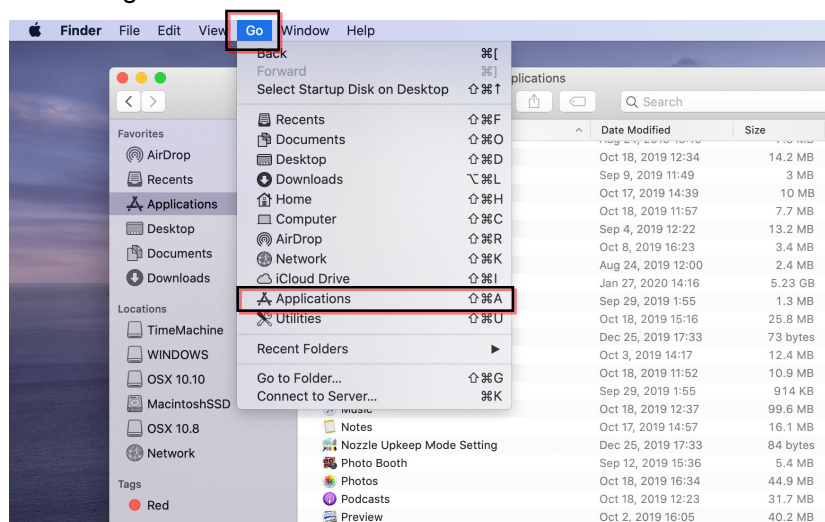


3.2 Startup of Nozzle Upkeep Mode Setting Tool (for Mac)

Select the “Application” from the Finder sidebar, and then run the “Nozzle Upkeep Mode Setting”.

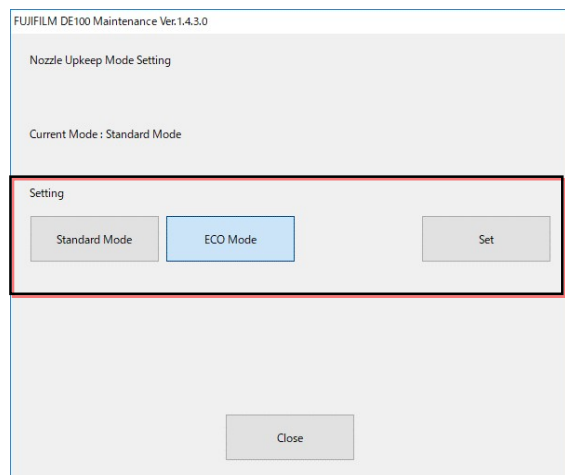


If the sidebar is not displayed, select the “Application” from "Go" in the menu and start the “Nozzle Upkeep Mode Setting” from the Finder.



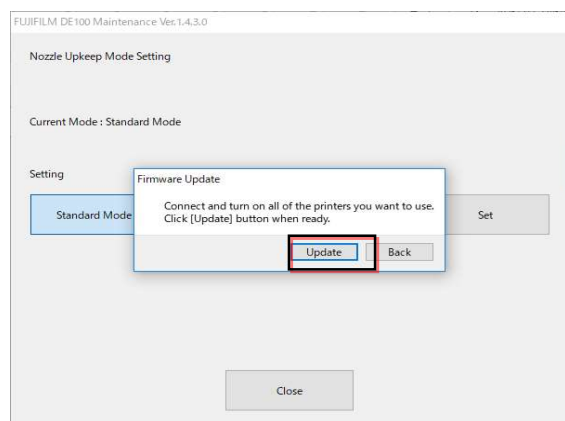
3.3 Setting Procedure

1) Click the “mode” button you choose, and then click the “Set” button.



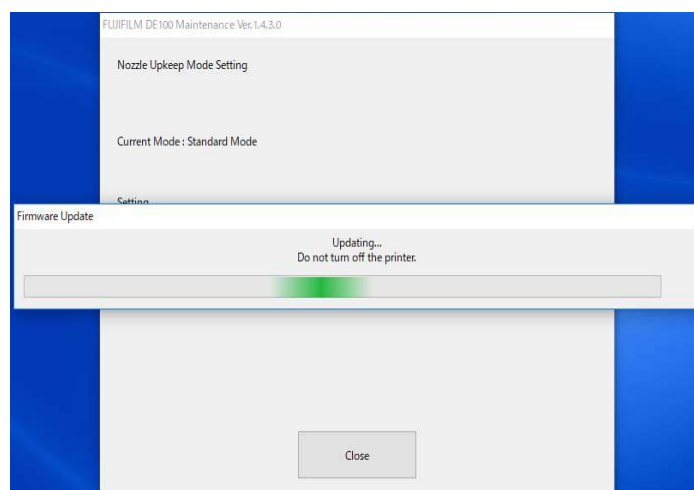
2) Click the “Update” button.

※The setting of Nozzle Upkeep Mode is applied to all connected printers.

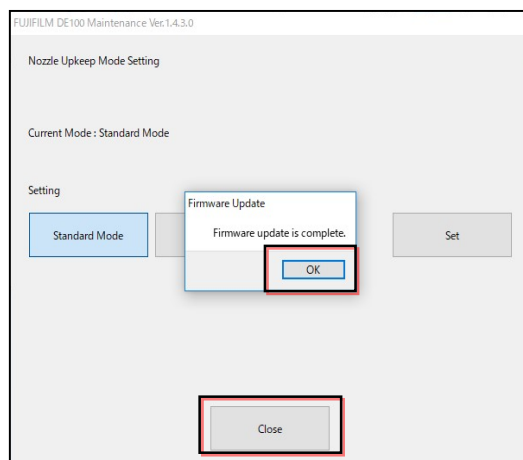


3) Firmware update is automatically started.

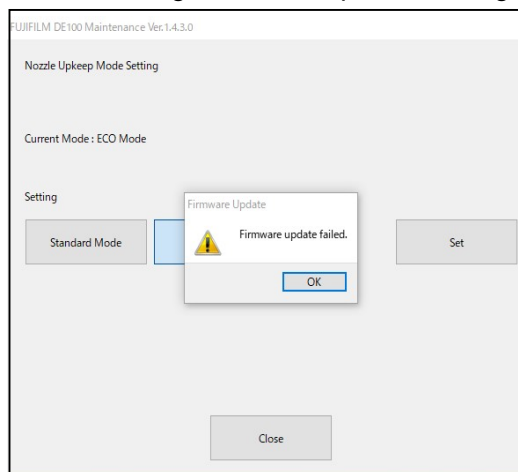
※ Printer is re-started automatically during firmware update.



4) Click the “OK” button, and then click the “Close” button to close the setting screen.

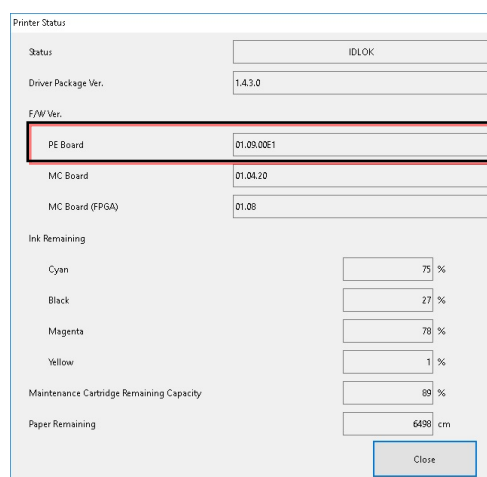
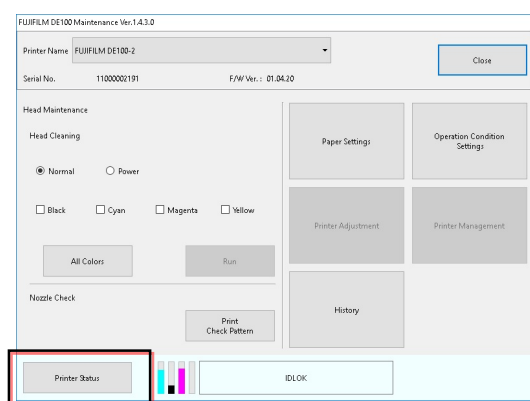


(Note) When the following message is displayed, the Nozzle Upkeep Mode setting change has failed.
After restarting the PC and printer, change the settings again.



4 Version check

Run the Maintenance Tool, and then click the “Printer Status” button.



Check the version of PE board. When using ECO mode, E1 is displayed at the end of the version number.

Standard Mode	01.09.00
ECO Mode	01.09.00E1